

Pub. Date    October 2011  
Topic        Economy  
Coverage    Powys  
Reference  
R\_PIP\_1110\_01-10129-2011-en

## CONTENTS

Introduction	1
Key Points	1
Reference Notes	2
Table 1 - Gross Value Added per hour worked	3
Graph 1 - Gross Value Added per hour worked	3
Table 2 - Gross Value Added per filled job	4
Graph 2 - Gross Value Added per filled job	4
Map 1 - Gross Value Added per hour worked	5
Map 2 - Gross Value Added per job filled	6

### Authors:

*Di Greaves and Geraint Morgan,  
Statistical Research and  
Information Unit,  
Powys County Council*

### Contact Details:

[statistics@powys.gov.uk](mailto:statistics@powys.gov.uk)

*Statistical Research &  
Information Unit,  
Powys County Council,  
County Hall,  
Llandrindod  
LD1 5LG*

*Di Greaves 01597 826780  
Geraint Morgan 01597 826442*

## Productivity in Powys 2004-2008

### INTRODUCTION

On 10th October 2011, the Office for National Statistics published experimental estimates of productivity for European NUTS2 and NUTS3 areas in comparison with the UK.

The estimates are calculated from the Gross Value Added (GVA) statistics in terms of both GVA per hour worked and GVA per filled job.

NUTS2 and NUTS3 areas are combinations of counties used for European funding purposes.

### KEY POINTS

- Powys **GVA per hour worked** was **66.9%** of the UK average in 2008, the lowest in Wales and the 3<sup>rd</sup> lowest in Great Britain among NUTS3 areas.
- Powys **GVA per filled job** was **67.9%** of the UK average in 2008, the lowest in Wales and the 3<sup>rd</sup> lowest in the UK among NUTS3 areas.
- In both the above estimates the two areas with lower productivity than Powys were “Caithness, Sutherland, Ross & Cromarty” and “Lochaber, Skye, Lochalsh, Arran, Cumbrae, Argyll & Bute”.
- Powys **GVA per hour worked** fell from **75.1%** of the UK average in 2004 to **66.9%** in 2008. This fall was the 3<sup>rd</sup> largest among NUTS3 areas in Great Britain, only East Sussex and Blackpool performing worse.
- Powys **GVA per filled job** fell from **75.6%** of the UK average in 2004 to **67.9%** in 2008. This fall was the 2<sup>nd</sup> largest among NUTS3 areas in the UK, only East Sussex performing worse.

## REFERENCE NOTES

1. **Source**

These statistics are shown in the Sub-Regional Productivity tables published by ONS. For data tables and explanatory bulletin, see:

<http://tinyurl.com/SRP2008>

2. **Experimental Statistics**

The status of Experimental Statistics means that they have not yet been shown to meet the quality criteria for National Statistics, but are being published to involve users in the development of the methodology and to help build quality at an early stage.

3. **Local Estimates Constrained to Regional Estimates**

The sub-regional productivity data has been compiled to be consistent with the data in the regional table. This requires ensuring that the sub-regional measures of GVA, jobs and hours are all consistent with the regional totals.

4. **ONS Preferred Measure: GVA per hour worked**

Hours worked per job may differ across sub-regions due to different industrial structures and different levels of part-time working, and therefore GVA per hour worked is considered the preferred measure.

5. **NUTS Geographies**

Sub-regional productivity data is produced in this report for the NUTS 2 and NUTS 3 geographies. More details of NUTS geographies are available at: <http://tinyurl.com/NUTSguide>

6. **Copyright**

The data are Crown Copyright. You may use or re-use this information free of charge in any format or medium, under the terms of the Open Government Licence. To view this licence, visit <http://www.nationalarchives.gov.uk/doc/open-government-licence/> or write to the Information Policy Team, The National Archives, Kew, London TW9 4DU, or email: [psi@nationalarchives.gsi.gov.uk](mailto:psi@nationalarchives.gsi.gov.uk).

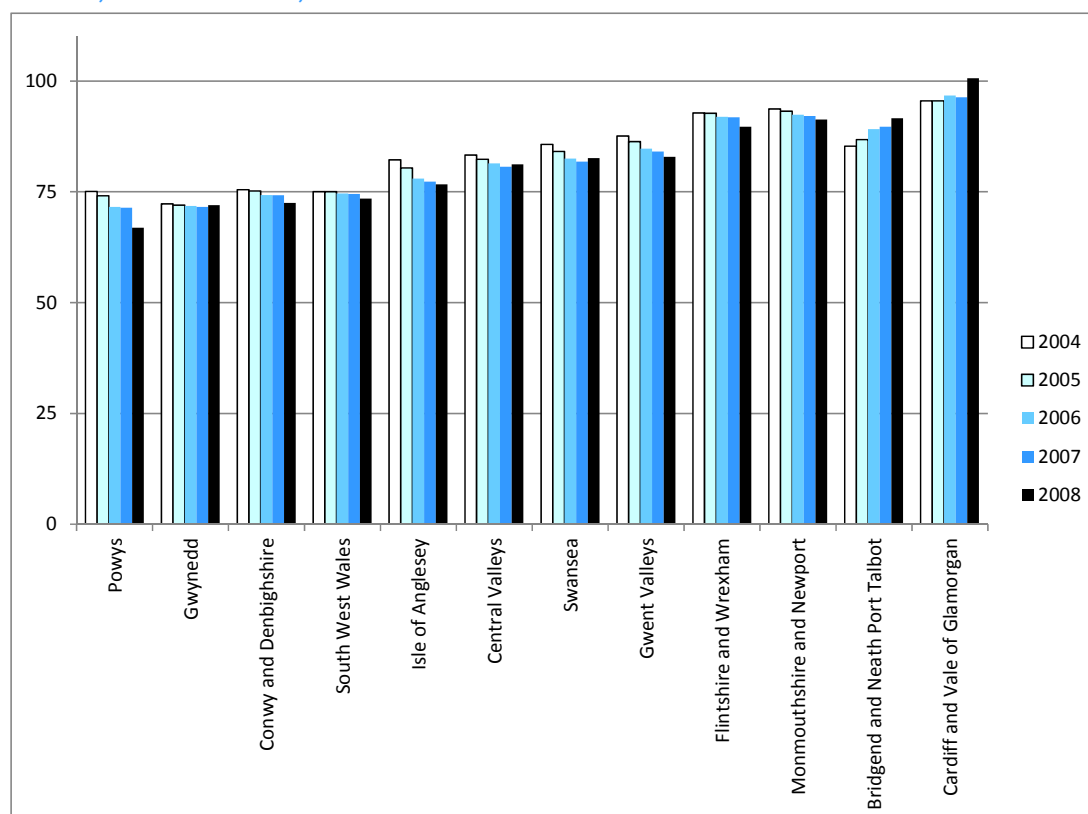
Table 1: Productivity Gross Value Added per hour worked relative to UK, 2004-2008, NUTS2 and NUTS3 areas in Wales

	2004	2005	2006	2007	2008	Change 2004-08
<b>East Wales</b>	<b>92.2</b>	<b>92</b>	<b>91.8</b>	<b>91.6</b>	<b>92.3</b>	<b>0.1%</b>
Cardiff and Vale of Glamorgan	95.5	95.5	96.7	96.3	101	5.3%
Flintshire and Wrexham	92.8	92.7	91.9	91.8	89.7	-3.3%
Monmouthshire and Newport	93.7	93.2	92.4	92.1	91.3	-2.6%
<b>Powys</b>	<b>75.1</b>	<b>74.1</b>	<b>71.6</b>	<b>71.4</b>	<b>66.9</b>	<b>-10.9%</b>
<b>West Wales and the Valleys</b>	<b>81.1</b>	<b>80.6</b>	<b>80</b>	<b>79.8</b>	<b>79.6</b>	<b>-1.8%</b>
Bridgend and Neath Port Talbot	85.3	86.8	89.1	89.7	91.6	7.4%
Central Valleys	83.3	82.3	81.4	80.7	81.2	-2.5%
Conwy and Denbighshire	75.5	75.2	74.3	74.2	72.5	-4.0%
Gwent Valleys	87.6	86.3	84.7	84.1	82.9	-5.4%
Gwynedd	72.3	72	71.8	71.6	72	-0.4%
Isle of Anglesey	82.2	80.4	78	77.3	76.7	-6.7%
South West Wales	75	75	74.6	74.5	73.5	-2.0%
Swansea	85.7	84.1	82.5	81.8	82.6	-3.6%

(UK=100)

Source: Office for National Statistics Sub-Regional Productivity © Crown Copyright

Graph 1: Productivity Gross Value Added per hour worked relative to UK, 2004-2008, NUTS3 areas in Wales



(UK=100)

Source: Office for National Statistics Sub-Regional Productivity © Crown Copyright

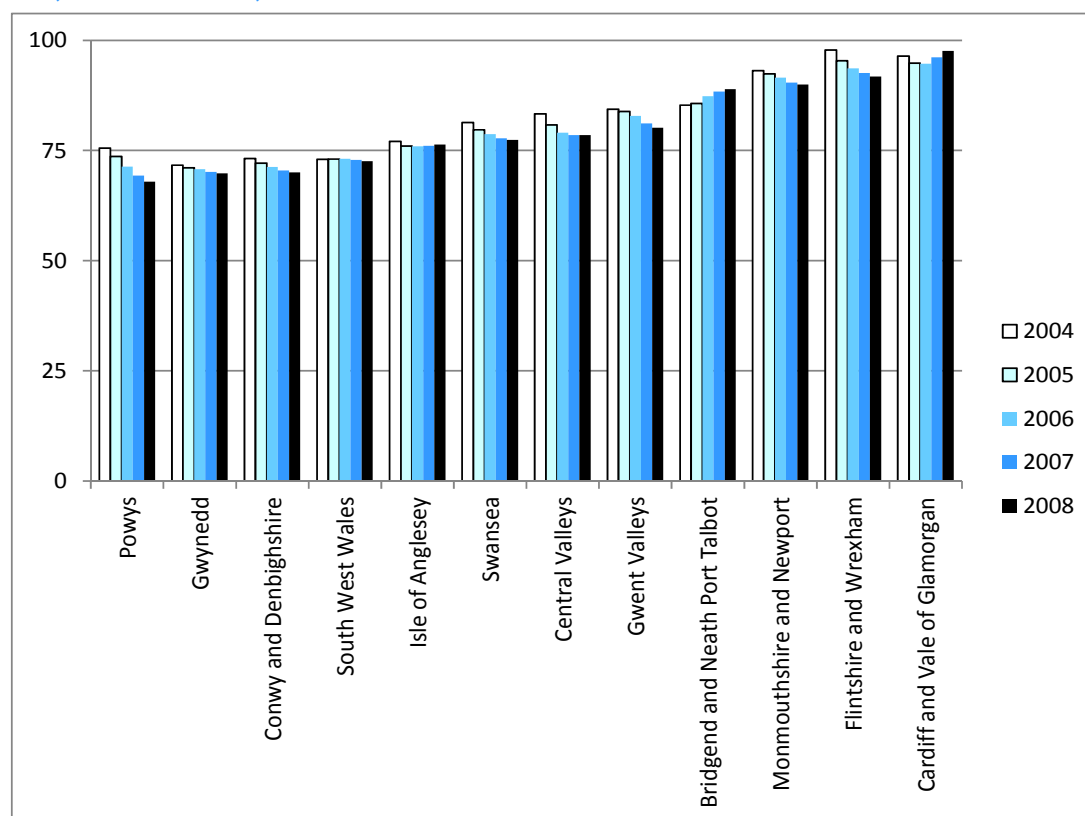
Table 2: Productivity Gross Value Added per job filled relative to UK, 2004-2008, NUTS2 and NUTS3 areas in Wales

	2004	2005	2006	2007	2008	Change 2004-08
<b>East Wales</b>	<b>93.6</b>	<b>92.1</b>	<b>91.2</b>	<b>91.2</b>	<b>91.4</b>	<b>-2.4%</b>
Cardiff and Vale of Glamorgan	96.4	94.9	94.7	96.2	97.6	1.2%
Flintshire and Wrexham	97.8	95.3	93.6	92.6	91.8	-6.1%
Monmouthshire and Newport	93.1	92.4	91.5	90.4	89.9	-3.4%
<b>Powys</b>	<b>75.6</b>	<b>73.6</b>	<b>71.3</b>	<b>69.3</b>	<b>67.9</b>	<b>-10.1%</b>
<b>West Wales and the Valleys</b>	<b>79.1</b>	<b>78.3</b>	<b>77.9</b>	<b>77.4</b>	<b>77.2</b>	<b>-2.5%</b>
Bridgend and Neath Port Talbot	85.3	85.7	87.3	88.4	88.9	4.2%
Central Valleys	83.3	80.8	79	78.5	78.5	-5.7%
Conwy and Denbighshire	73.2	72.1	71.2	70.5	70	-4.3%
Gwent Valleys	84.4	83.8	82.9	81.1	80.2	-5.0%
Gwynedd	71.7	71.1	70.7	70.2	69.8	-2.6%
Isle of Anglesey	77.1	76	76	76.1	76.3	-1.0%
South West Wales	73.0	73.1	73.1	72.9	72.6	-0.5%
Swansea	81.4	79.7	78.7	77.8	77.4	-4.8%

(UK=100)

Source: Office for National Statistics Sub-Regional Productivity © Crown Copyright

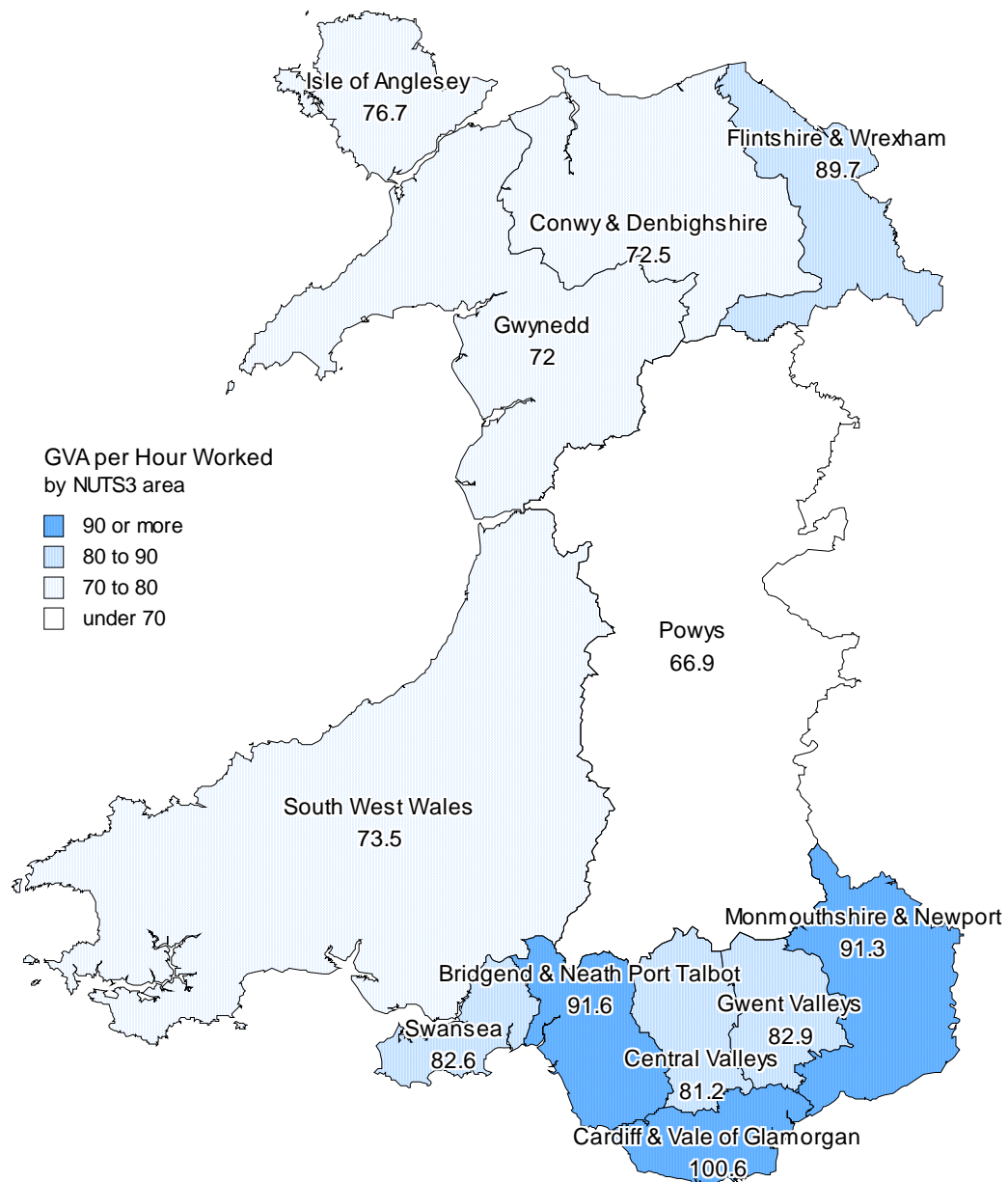
Graph 2: Productivity Gross Value Added per job filled relative to UK, 2004-2008, NUTS3 areas in Wales



(UK=100)

Source: Office for National Statistics Sub-Regional Productivity © Crown Copyright

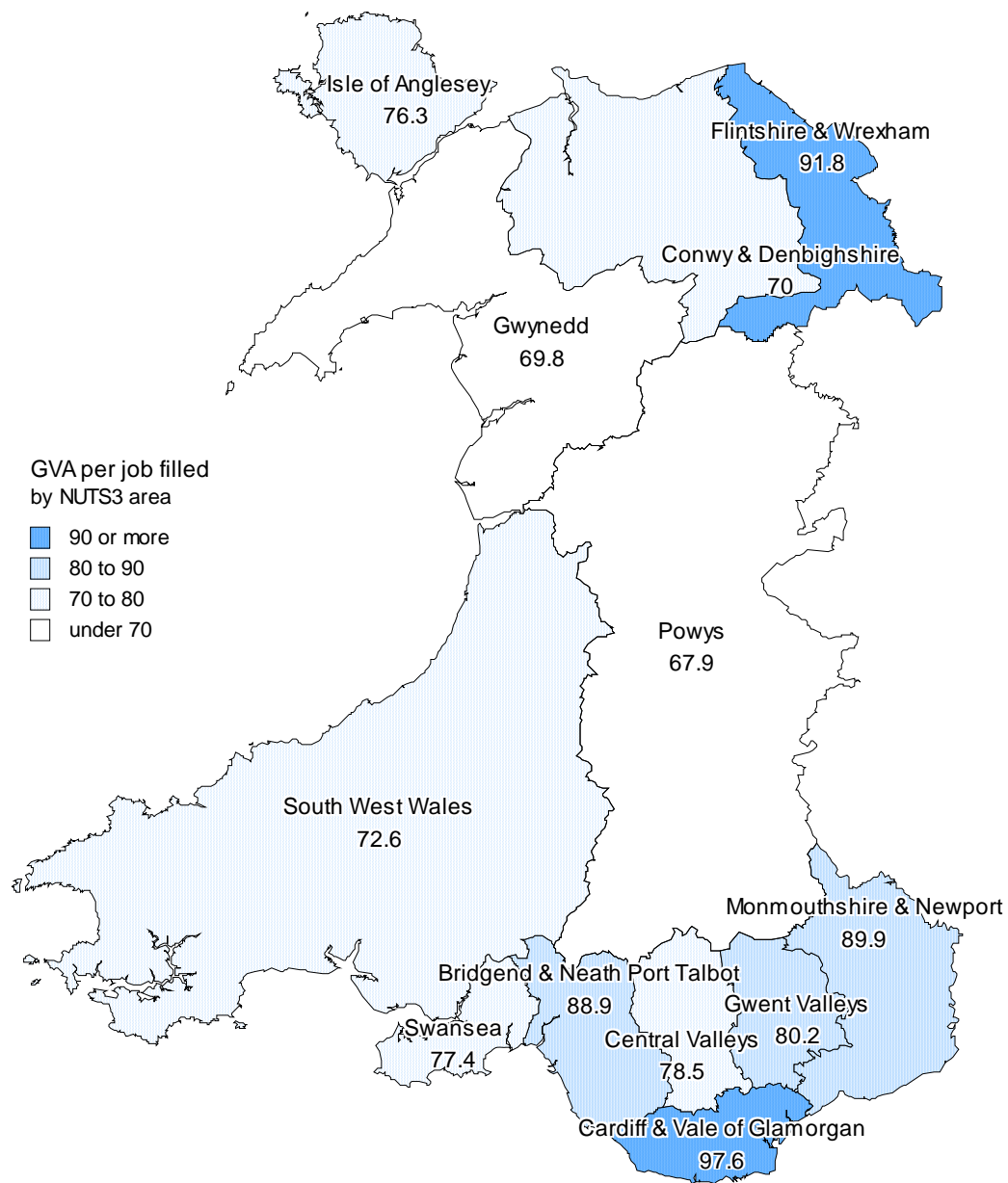
Map 1: Productivity Gross Value Added per hour worked relative to UK, 2008, NUTS3 areas in Wales



Powys Unitary Authority boundary © Crown copyright and database rights [2011] Ordnance Survey 100025371

Source: Office for National Statistics Sub-Regional Productivity © Crown Copyright

Map 1: Productivity Gross Value Added per job filled relative to UK, 2008, NUTS3 areas in Wales



Powys Unitary Authority boundary © Crown copyright and database rights [2011] Ordnance Survey 100025371

Source: Office for National Statistics Sub-Regional Productivity © Crown Copyright